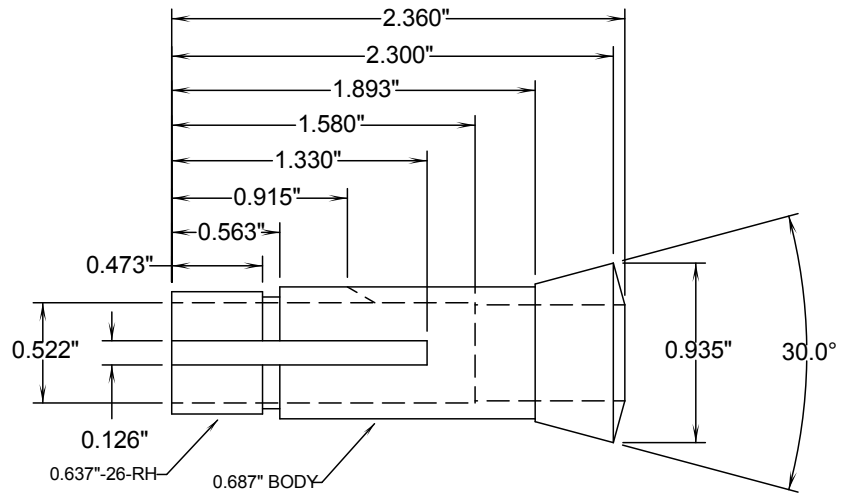
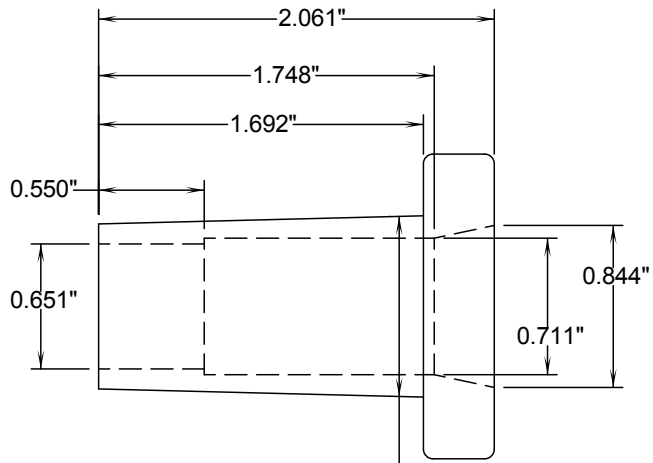


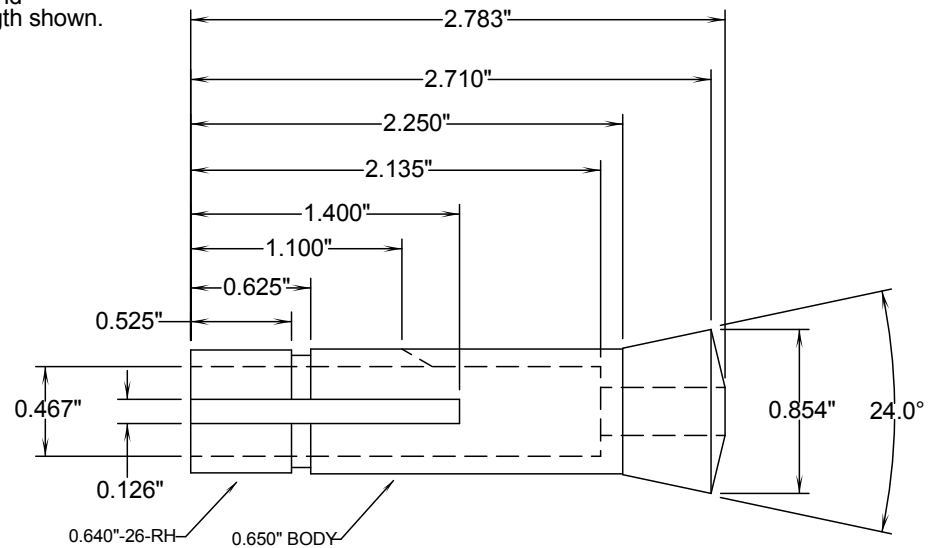
0.9380" MEAS 1/8" FROM FLANGE



Logan Engineering Co. 3AT Collet Adapter for Morse #3 Spindle  
 Dimensions taken from factory adapter, Morse taper table and  
 1/2" Hardinge collet. Slit collet 0.05" wide @ 120 deg to length shown.  
 #3 Morse Stub Taper is 0.60235"/ft (0.050196"/" calc/ref)



0.9380" MEAS 1/8" FROM FLANGE



Proposed 3C Collet Adapter for Morse #3 Spindle. Check  
 seating depth and length of drawbar! Dimensions taken from  
 Morse taper table and 1/4" Hardinge collet. Slit collet 0.05"  
 wide @ 120 deg to length shown. #3 Morse Stub Taper as  
 above.

7/16/2009 Rev. 1  
 Dimensions are measured from physical parts and  
 no guarantee is made for correctness. No liability  
 is assumed for loss or damage due to the use of  
 this information.